



AKHILAM
- PROJECTS -



P02200006507

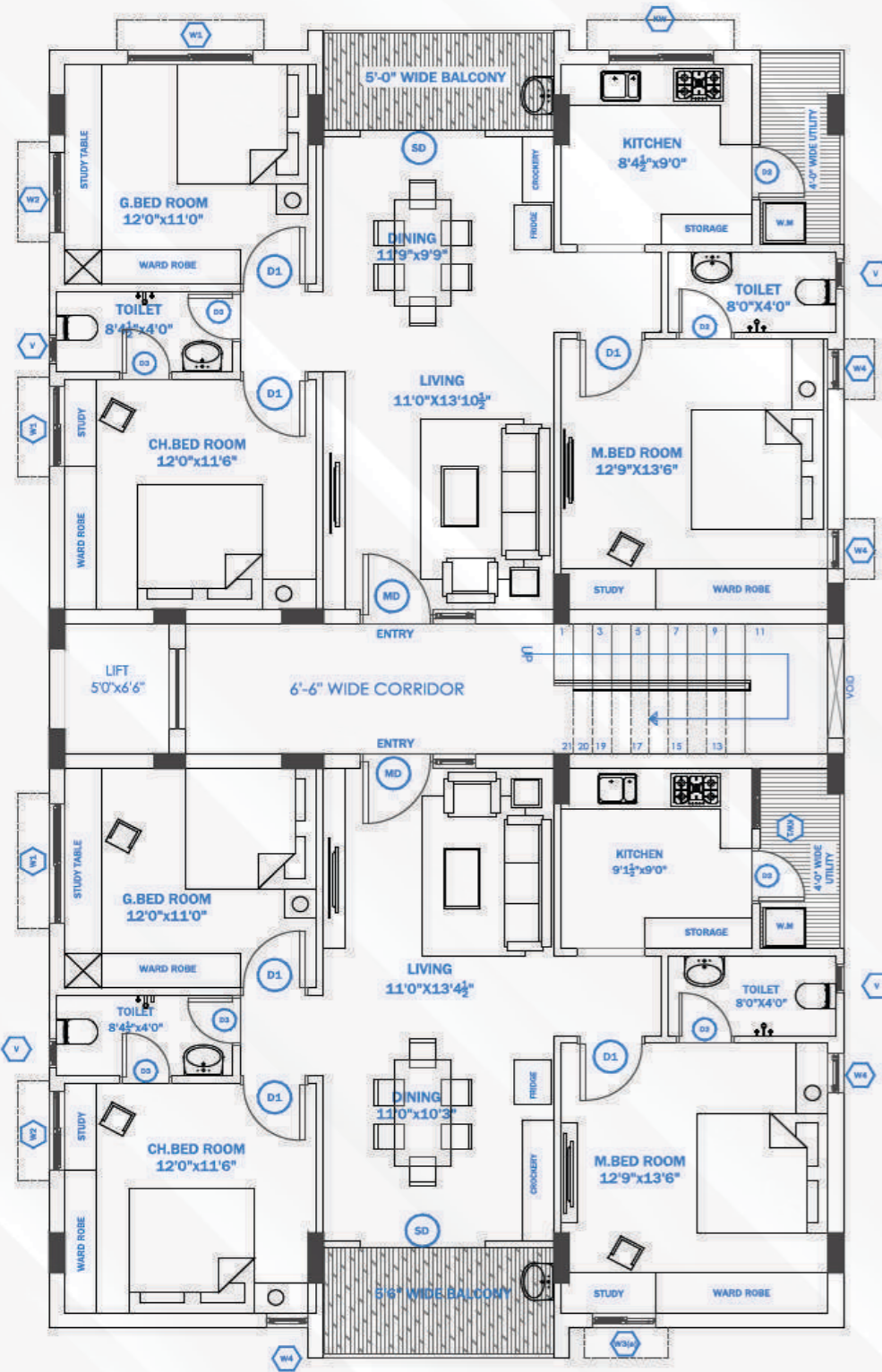


*Akhilam's Aadvik
Residency*

Elegant **3BHK** Flats
@ KOMPALLY

THE BEST WAY TO TURN A
HOUSE INTO A HOME IS TO
FILL IT WITH LOVE & LAUGHTER

TYPICAL FLOOR PLAN



★ 1385 SFT
(WEST FACING FLAT)



★ 1395 SFT
(EAST FACING FLAT)

SPECIFICATIONS



STRUCTURE

RCC Framed Structure.

SUPER STRUCTURE

Light Weight Red Brick masonry in cement Mortar & Two coats plastering with sponge finishing.

KITCHEN

Kitchen counter with granite top, SS sink & ceramic tiles dado.

SANITARY & CP FITTINGS

Kerovit (Kajaria) / equivalent sanitary and fittings.

AMENITIES

Lift: 6 Passenger lift of standard make.
Generator: Electrical Back up for all lights and fans in flats, and common areas. Parking: Ample covered parking. Electrical: Transformer with 3 Phase supply.

PAINTING

Asian Paint Premium for internal and ACE and APEX for external

FLOORING

Internal: Kajaria/equivalent Vitrified tiles in all rooms Toilets & Balconies: Anti-skid/Matt finish Tiles Toilet Walls: Kajaria/equivalent glazed tiles Corridor & Staircase: Granite flooring

DOORS & WINDOWS

Main Door: Teak wood Frame & Pre-Moulded flushed shutter with premium finish with Godrej/Equivalent Locks. Internal doors: Teak wood frame with laminate doors for bedrooms. WPVC doors and frames for Toilets & Utilities. Windows: Premium UPVC windows with sliding glass, Mesh & safety MS grill.

ELECTRICAL

Switches & Sockets: Anchor Penta/Havells Coral or equivalent brand. Wires: Polycab/equivalent. Adequate switch points for appliances. Power back up in all rooms and common areas.

PLUMBING

Astral / Equivalent CPVC Water Lones, Prince / Equivalent PVC Drain Linee PLUMBING Branded CPVC water lines and PVC drain lines.

RAILING

SS railing in Balconies and Staircase.

AKHILAM PROJECTS

brings you a new project "AADVIK", 3bhk luxury flats efficiently designed, engineered to elegance, at the cost that is delight for your budget. A home strategically located to meet every need of a happy & modern family.

Location Highlights

Connectivity

- 5 Mins walk from Kompally Doolapally road
- 5 Mins from NH44
- 15 Mins drive from ORR
- 15 Mins drive from Gateway IT Park.
- 20 Mins from Tech Mahindra

Educational Institutes

- DRS International School : 10 Mins
- Unicent International School : 5 Mins
- St Martins Engineering College : 3 Mins
- Sadhu Vaswani International School : 10 Mins
- Sunflower Vedic School : 15 Mins
- Malla Reddy Institutions : 10 Mins

Leisure & Shopping

- Ratnadeep: 5 mins
- Reliance Smart/Big Bazaar : 5 Mins
- CinePlanet Multiplex : 10Mins
- Dhola-Ri-Dhani : 5 Mins
- D-Mart : 10 Mins
- Suchitra X Roads : 15 Mins

Location Map



OUR PREVIOUS PROJECTS



AKSHAYA @ SUCHITRA



PADMA BLOSSOMS @ MANIKONDA

Home Inspection Partner :



🌐 akhilamprojects.com

✉ shashi676@gmail.com

Office Address

#301, Plot No. 15, S.No. 76/P,
SMR Complex, Behind Russh-
Hospital, Suchitra X Roads.
Hyderabad.

Site Address

Plot No.8, Aditya Sundew-
Layout, Kompally Municipality,
Dundigal Mandal, Medchal
District, Telangana.



☎ 99599 39988 / 96762 84621